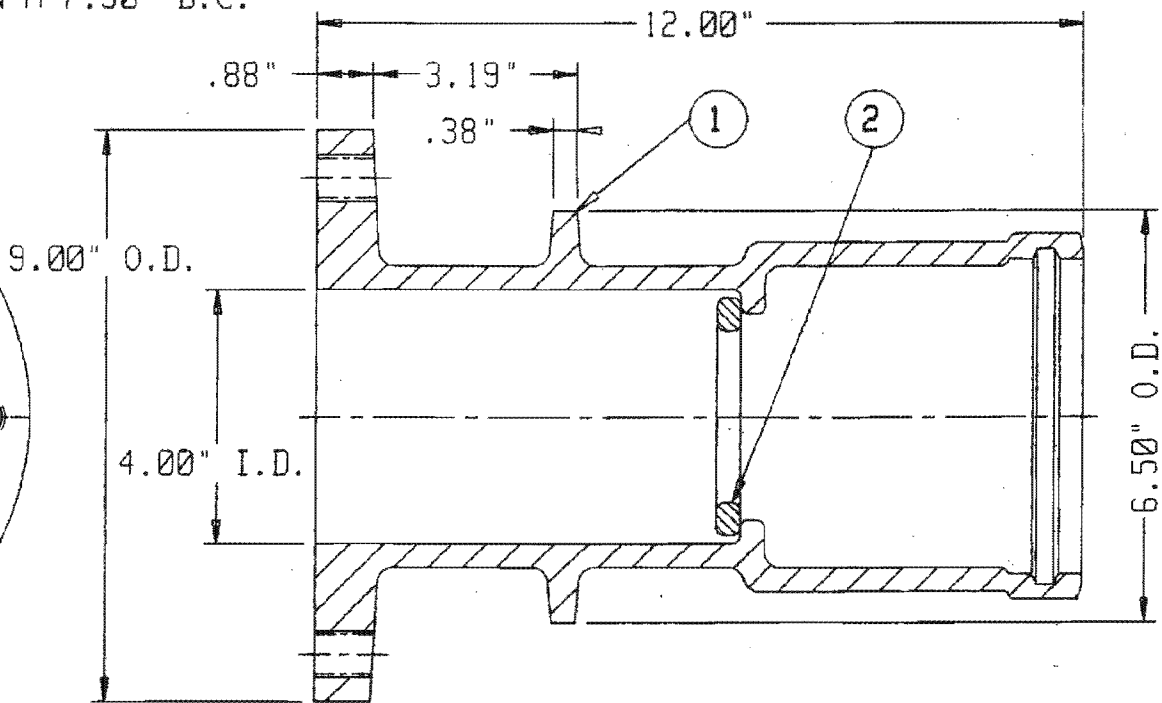
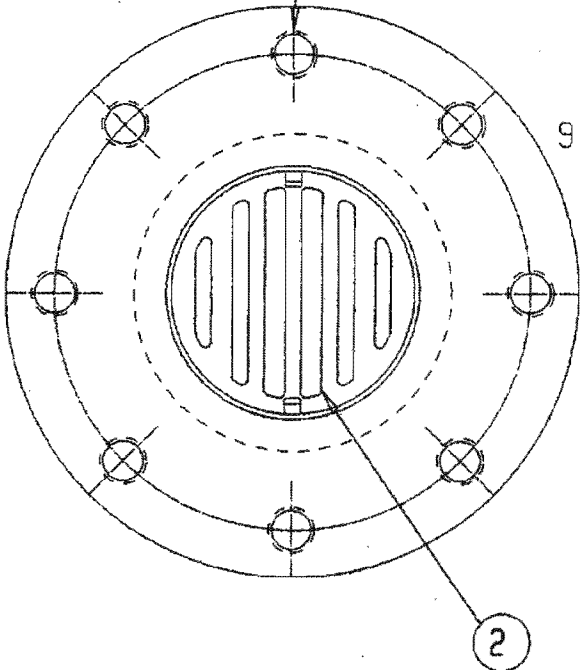


Parts List

Item	Description	Required	Material
1	Wall Thimble	1	Cast Iron A126B
2	Grating	1	Cast Iron A126B

5/8"-11UNC TAP THRU,
LOCATED ON A 7.50" B.C.
(8) REQ'D



Can be extended to any length by using C900 P.V.C.

MATERIAL:	4" WALL THIMBLE WITH REMOVABLE GRATE
DATE:	
TROY VALVE Troy, PA	NO. 191001