

ORIENTAITON FOR BURIED SERVICE

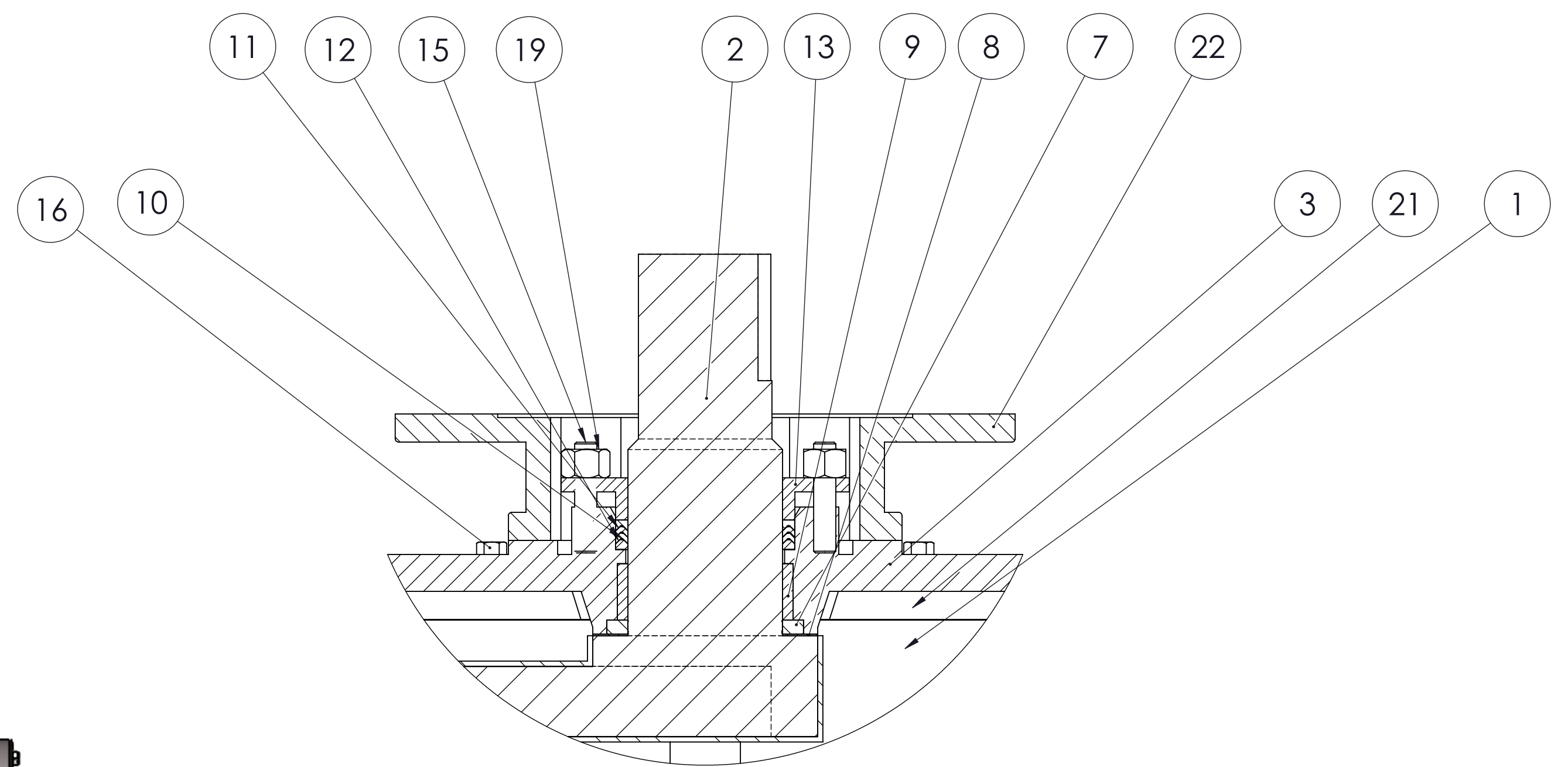
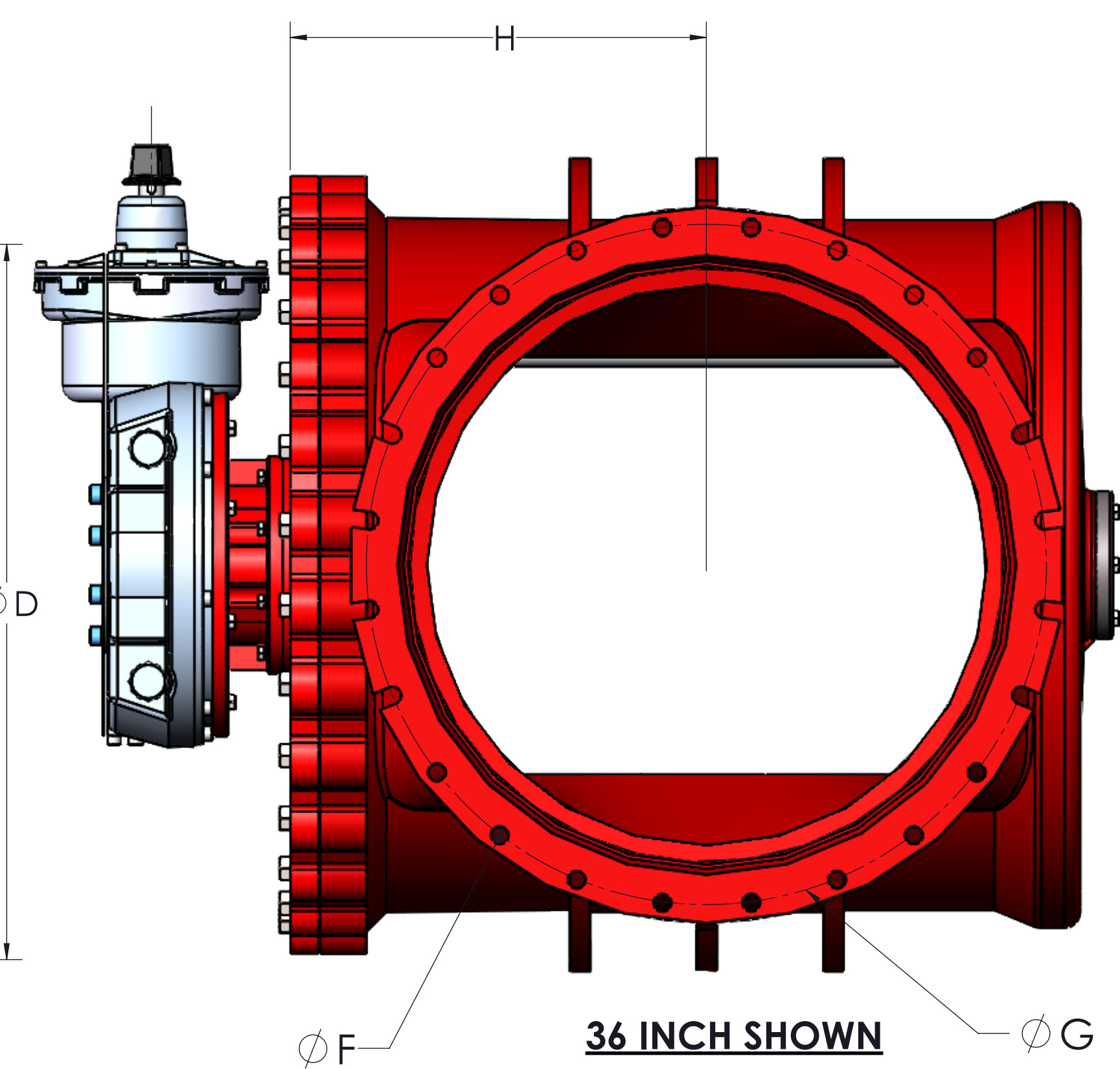
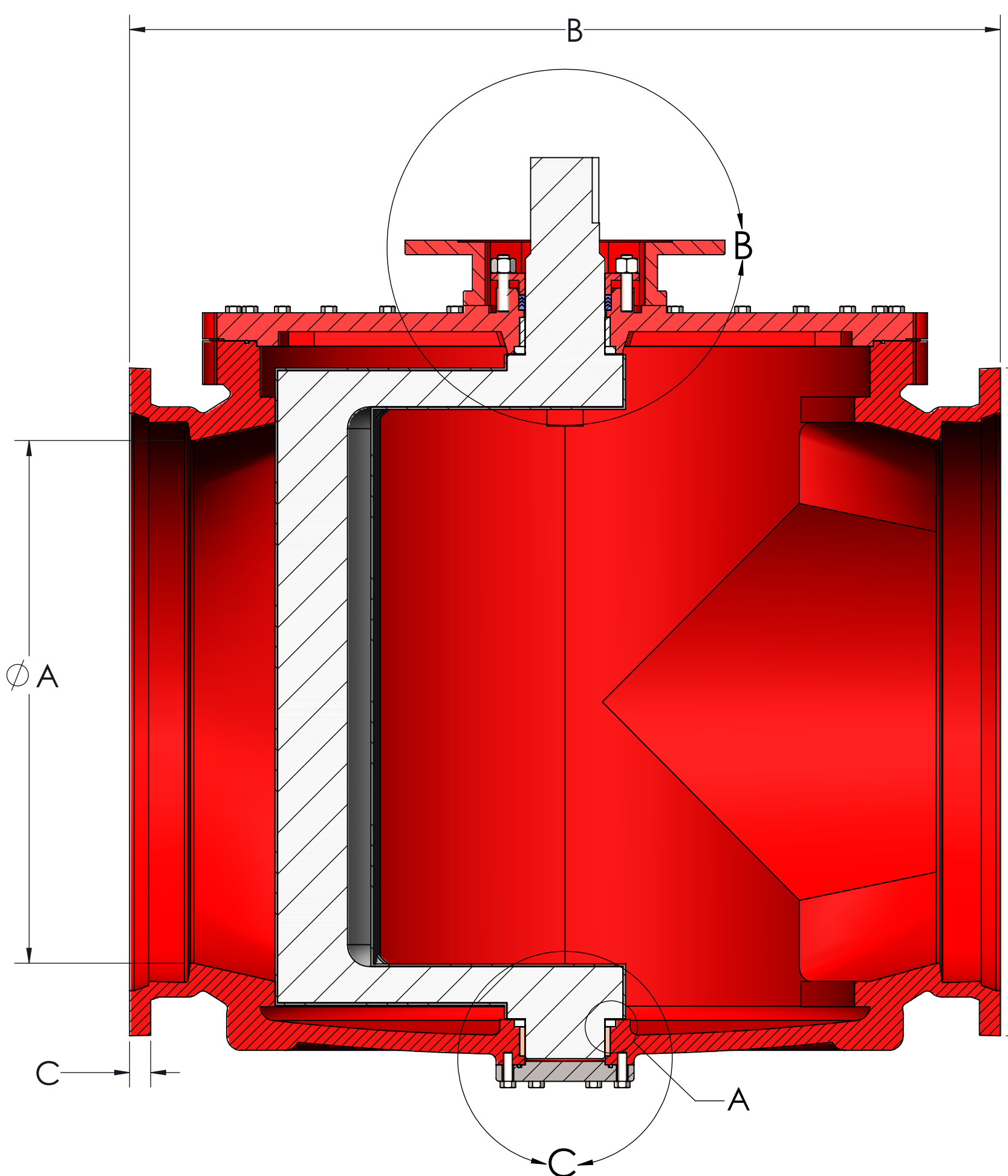
- NOTE:**
- Interior and exterior ferrous metal surfaces epoxy coated to comply with the AWWA C550 Standard.
 - Pentagon ballons refer to items only related to 30 and 36 inch valves
 - 304 stainless steel fasteners are standard, 316 SS available upon request
 - Mount on side for buried service
 - In horizontal pipelines install valve so plug is horizontal and rotates upward as valve opens.
 - For installs with suspended solids and dirty gases flow direction should enter seat side and open with plug up out of sediment
 - For install with liquids without suspended solids and clean gases flow direction should enter the opposite side from the seat with plug up when open
 - Gearbox on valves will not have indicator
 - Call for operating extension solutions

ITEM NO.	PART NUMBER	DESCRIPTION
1	Body-MJ	ASTM A536 Gr. 65-45-12 or 70-50-05
2	Plug Rubber Coating	ASTM A536 Gr. 65-45-12 or 70-50-05 NBR
3	Cover	ASTM A536 Gr. 65-45-12 or 70-50-05
4	Bottom Thrust	PTFE
5	Bottom Bearing	Sintered Alloy SS316
6	Grit Guard Shaft Seal (Lower)	NBR
7	Grit Guard Shaft Seal (Upper)	NBR
8	Upper Thrust	PTFE
9	Upper Bearing	Sintered Alloy SS316
10	V2-Packing-AN6225-55	NBR
11	V2-Top-Packing-AN6225-55	NBR
12	V-Bottom-Packing-AN6225-55	NBR
13	FP Gland (for Actuator)	ASTM A536 Gr. 65-45-12 or 70-50-05
14	Bottom Cover	ASTM A536 Gr. 65-45-12 or 70-50-05
15	Cover Studs	Stainless Steel ASTM A276.T304 or 316
16	Hexagon Cover Bolts	Stainless Steel ASTM A276.T304 or 316
17	Bottom Cover Bolts	Stainless Steel ASTM A276.T304 or 316
18	Hexagon Adaptor Bolts	Stainless Steel ASTM A276.T304 or 316
19	Cover Stud Hex Nut	Stainless Steel ASTM A276.T304 or 316
20	J-ring Bottom Cover	NBR
21	O-Ring Top Cover	NBR
22	FP Adaptor-Close	ASTM A536 Gr. 65-45-12 or 70-50-05

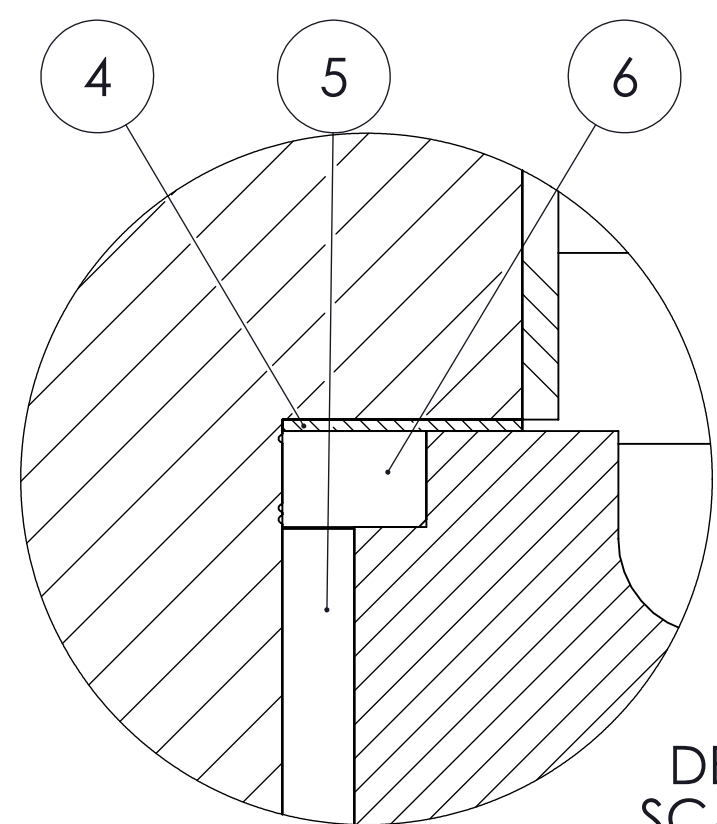
BURIED GEARBOX

SHOWN OPEN WITH PLUG UP

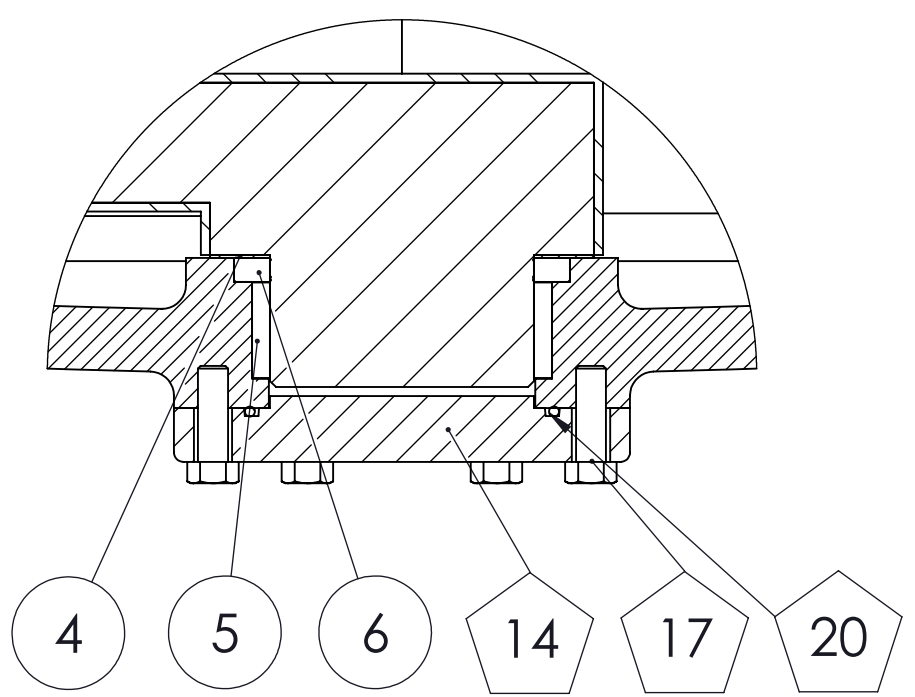
I (Approx.)



DETAIL B SCALE 1 : 4



DETAIL A SCALE 1 : 1



DETAIL C SCALE 1 : 4

A [VALVE SIZE]	B	C	D	F	G	H	I	WEIGHT (LBS)	ROTORK GEAR	GEAR RATIO	ROTORK HANDWHEEL	Cv (GPM)	WATER WORKING PRESSURE PSI	HYDROSTATIC TEST PSI	FLANGE ISO
14	24.5	.79	Ø20.25	10 x Ø7/8 THRU	Ø18-3/4	12.88	18.00	720	AB2000N	109:1	SG400	5789	150 PSI	300 PSI	F16
16	27.25	.85	Ø22.50	12 x Ø7/8 THRU	Ø21	14.69	22.50	850	AB2000N	109:1	SG400	6956	150 PSI	300 PSI	F16
18	29.25	1.0	Ø24.84	12 x Ø7/8 THRU	Ø23-1/4	16.42	21.50	1150	AB2000LB	109:1	SG600	7872	150 PSI	300 PSI	F25
20	31.0	1.02	Ø27.08	14 x Ø7/8 THRU	Ø25-1/2	17.09	22.25	1425	AB1950N/PR4	217:1	SG600	12370	150 PSI	300 PSI	F25
24	42.00	1.02	Ø31.57	16 x Ø7/8 THRU	Ø30	21.06	28.00	3150	AB3000NLB/PR4	243:1	SG600	30930	150 PSI	300 PSI	F30
30	51.00	1.32	Ø39.12	20 x Ø1-1/8 THRU	Ø36-7/8	22.19	30.69	5700	IW82	720:1	F700	48774	150 PSI	300 PSI	F35
36	60.00	1.45	Ø46.00	24 x Ø1-1/8 THRU	Ø43-3/4	25.81	34.75	8400	IW9	960:1	F700	74595	150 PSI	300 PSI	F40

REVISIONS			
ZONE	REV.	DESCRIPTION	DATE
	1	RELEASED	11/13/15
	2	UPDATED FASTENER VIEW AND NOTES	2/19/2016
	3	ADDED ENCAPSULATION TO PLUG AND UPDATE TITLE BLOCK	4/5/2016

DRAWN	NAME	DATE	KENNEDY VALVE Division of McWane, Inc. <small>1021 EAST WATER STREET ELMIRA, NEW YORK 14901</small>
CHECKED	ML	12/17/2015	
APPROVED	ML	11/13/2015	
DO NOT SCALE DRAWING			TITLE:
MATERIAL: SEE TABLE			14"-36" 100% PORT" MJ Eccentric Plug Valve w/ ROTORK GEAR for Buried Service
Weight: SEE TABLE			SIZE DWG. NO. SUB910280T
<small>PROPRIETARY AND CONFIDENTIAL</small> <small>THE INFORMATION CONTAINED IS THE SOLE PROPERTY OF KENNEDY VALVE CO. ANY REPRODUCTION IN PART OR AS A WHOLE WITHOUT THE WRITTEN PERMISSION OF KENNEDY VALVE CO. IS PROHIBITED. DESIGN & INVENTION RIGHTS RESERVED.</small>			REV 3
			SHEET 1 OF 1