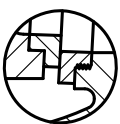
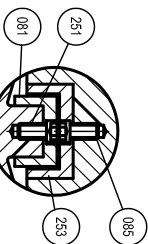


Detail A
Body Seat Screwed In



Detail for Guides



Marking
 Size (inch)
 125 WSP
 250 PS1
 ARD
 AWWA C500
 DI

⊕ SCL
 DI 200

By pass GV
 See Dwg No. USA1087C

SIZE ØD IN.	L	ØD	ØC	Ød1	Øh	n	h	n1	n2	T	A	H	H1	H2	H3	ØW	Bypass Size
30	26	39.12	36.88	32.17	1 1/8	20	1 1/8	10	10	1.81	45.27	69.56	26.77	28.97	35.09	19.75	4"
36	32	46.00	43.75	38.47	1 1/8	24	1 1/8	10	14	2.00	53.93	80.90	29.52	37.12	39.63	24.50	6"
42	32	53.12	50.62	44.67	1 3/8	28	1 3/8	12	16	2.00	60.39	97.41	35.43	43.89	42.00	24.50	6"
48	36	60.00	57.50	50.97	1 3/8	32	1 3/8	14	18	2.00	68.43	106.28	39.37	48.62	48.06	24.50	8"

Remark - End flanges mechanical joint conform to ANSI/AWWA C111/A2.11
 - Dimensions in inches

432	Packing Box Bolt	Zinc Coated Steel	A 307 Grade B	1 set
350	O-Ring	Rubber (Guma N)	D 2000 BK 807	1
345	Packing	Braided Packing Synthetic Yarn With PTFE		1
320	Bonnet Gasket	Non Asbestos Sheet		1
253	Disc Gille	Bronze	B 62	2
251	Disc Gille Bolt	Zinc Coated Steel	A 307 Grade B	1 set
186	Stant Bolt & Nut	Zinc Coated Steel	A 307 Grade B	1 set
181	Top Nut	Zinc Coated Steel	A 307 Grade B	1
178	Giant Bolt & Nut	Zinc Coated Steel	A 307 Grade B	2
175	Bonnet Stud & Nut	Zinc Coated Steel	A 307 Grade B	1 set
168	Stern	Sainless Steel	A 276 Type 304	1
085	Disc Gille Bolt	Zinc Coated Steel	A 307 Grade B	1 set
084	Roller	Bronze	B 62	2
083	Roller Box	Bronze	B 62	1
082	Bonnet Guide	Bronze	B 62	2
081	Body Guide	Bronze	B 62	2
071	Stern Nut	Bronze	B 62	1
069	Giant Bushing	Bronze	B 62	1
067	Packing Box Bushing	Bronze	B 62	1
066	Bonnet Bushing	Bronze	B 62	1
062	Disc Seat Ring	Bronze	B 62	2
061	Body Seat Ring	Bronze	B 62	2
049	Gear Operator			1 set
012	Stand	Cast Iron	A 126 Class B	1
010	Handwheel / Op Nut	Cast Iron	A 126 Class B	1
005	Gland	Ductile Iron	A 536 Grade 65-45-12	1
004	Packing Box	Ductile Iron	A 536 Grade 65-45-12	1
003	Disc	Ductile Iron	A 536 Grade 65-45-12	1
002	Bonnet	Ductile Iron	A 536 Grade 65-45-12	1
001	Body	Ductile Iron	A 536 Grade 65-45-12	1

NO.	PARTS	MATERIAL	ASTM DESIGNATION	QTY
MATERIAL LIST				
HYDRO SHELL				550 PSI
HYDRO VALVE SEAT				300 PSI
HYDRO BACK SEAT				- PSI
WORKING PRESSURE				300 PSI
TEST PRESSURE				300 PSI

TITLE:
 30"-48" SOLID WEDGE GATE VALVE - NRS - MJ END -
 BEVEL GEAR-BOTTOM BYPASS-SERIES 100

A DIVISION OF MEYANE INC.
 1800 GREENBERGER DEAR ROAD, ANNISTON, AL 36207
 PHONE (256)831-2236 - FAX (256)831-2884

TPP-SINGV
 SCALE: NONE
 DWG. NO: 100-30-45-MJ-68BP
 DATE: 5/19/11