

CLOW CANADA - M-67 HERITAGE BRIGADIER FIRE HYDRANT SPECIFICATION

TESTING AND DESIGN SPECIFICATIONS (PER AWWA C502 / NSF /ULC & FM)

1. Hydrant shall be manufactured in accordance with AWWA C502 latest revision
2. Hydrant Has been certified by **UL** in accordance with the **ANSI/NSF 61 and ANSI/NSF 372** (LEAD CONTENT VERIFICATION OF PRODUCTS INCONTACT WITH POTABLE WATER)
3. Hydrant shall be designed for 250 *PSI* working pressure and tested to 500 *PSI* hydrostatic pressure.
4. Hydrant shall be rated for 250 *PSI*. **FM** working pressure and 200 *PSI*. **ULC** working pressure.
5. Hydrant shall be a compression type, dry barrel design with centre operating stem construction.
6. The O-ring seating surface on the upper stem shall be constructed of stainless steel.
7. Epoxy coating to be applied to interior and exterior of hydrant shoe for corrosion protection.
8. Hydrant shall be manufactured with operating nut and integral thrust collar made of bronze. A Delrin washer bearing shall be located above thrust collar for ease of hydrant operation.
9. Hydrant shall have a lower valve assembly that fully encapsulates the lower operating rod threads. This allows for increased corrosion resistance and ease of disassembly.
10. Intermediate section shall be ductile iron. (AWWA C110 – 08)

STANDARD HYDRANT FEATURES

1. Body style: **Octagon** with **Octagon** nozzle caps
2. Hydrant shall have an internally lubricated bronze operating nut with O-ring seals. Operating nut shall be of the Hydra-lube™ design to ensure self lubrication during operation.
3. Hydrant hose nozzles shall be mechanically locked into place by an external allen screw, and have O-ring seals.
4. Hydrant Lower rod shall be 1-1/4" in sq.
5. Hydrant shall have a main valve opening of 5-1/4".
6. Hydrant shall be a traffic model, complete with safety flanges and stem coupling. Upper body can be rotated 360 degrees to adjust pumper direction.
7. Hydrant shall be manufactured with a lower valve plate that bottoms out in the shoe for maximum opening.
8. Hydrant shall be backed by manufacturer's 12 year limited warranty
9. Hydrant shall be the Clow Canada Brigadier as manufactured by Clow Canada.

McAvity

CLOW

CONCORD

A division of Canada Pipe Company Ltd.

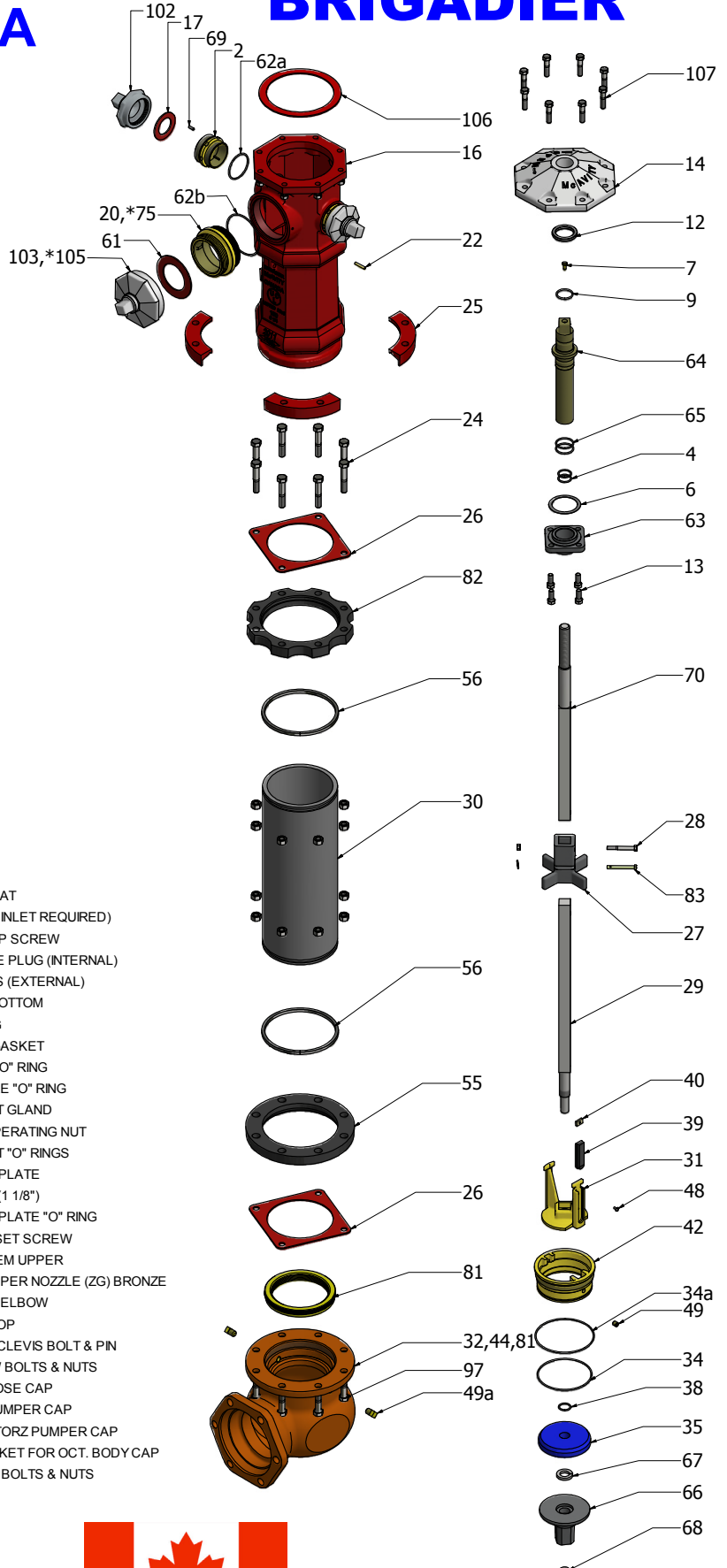
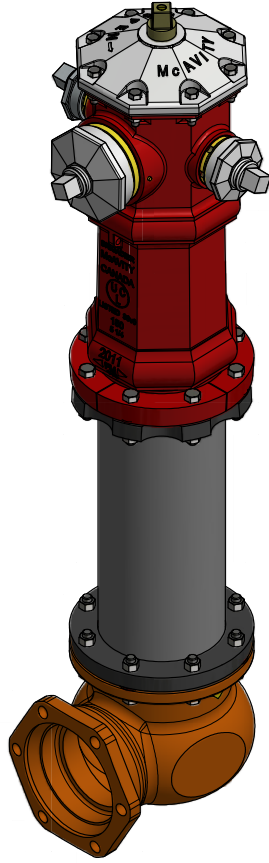
OPTIONAL HYDRANT FEATURES

1. 2hose **or** 2hose & one pumper upper body
2. AVAILABLE INLETS:
 - 150mm (6") Mechanical Joint (ANSI A-21.11)
 - 150mm (6") Online chamber flanged (ANSI B16.1 Class 125) for (AWWA C110 – 08) tee
 - 200mm (8") Mechanical Joint (ANSI A-21.11)
 - 200mm (8") Online chamber flanged (ANSI B16.1 Class 125) for (AWWA C110 – 08) tee
 - 150mm (6") flanged (ANSI B16.1 Class 125)
 - 150mm (6") flanged (ANSI B16.1 Class 250)
 - 150mm (6") Tyton (AWWA C111/A21.11)
3. All standard inlets available in CAST IRON ASTM A126 Class B
Or Ductile Iron ASTM A536 (65-45-12)
4. Hydra-lube operating nut – see standard shapes on submittal drawing
5. Two 65mm (2.5") hose nozzles - threads on nozzle ends to suit national, provincial or municipal standard or STORZ quick connect
6. One 114mm (4.5") pumper nozzle - threads on nozzle ends to suit national, provincial or municipal standard
7. 100mm (4") or 125mm (5") STORZ quick connect pumper nozzle.
8. Nozzle caps to suit – see standard shapes on submittal drawing.
9. Two external .375" NPT plugs in inlet @ 180 degrees / one internal .25" NPT plug
10. Hose & pumper nozzle cap chains
11. Hydrants painted / coated to suit national, provincial or municipal standard per AWWA C502 / AWWA C550

McAvity

CLOW
A division of Canada Pipe Company Ltd.

CONCORD



- DESCRIPTION**
- 2 HOSE NOZZLE
 - 4 HOUSING STEM "O" RINGS
 - 6 HOUSING JOINT GASKET
 - 7 OIL HOLE SCREW
 - 9 OPERATING NUT "O" RING
 - 12 OPERATING NUT BEARING
 - 13 HEX BOLT (1/2" x 1 1/4")
 - 14 OCTAGONAL BODY CAP
 - 16 OCTAGONAL HERITAGE BODY
 - 17 HOSE CAP GASKET
 - *18 STORZ 100 PUMPER CAP "O" RING
 - 20 PUMPER NOZZLE
 - 22 PUMPER NOZZLE PIN
 - 24 INTERSECTION BOLTS & NUTS
 - 25 SAFETY FLANGE (4 SEGMENTS)
 - 26 INTERSECTION GASKET
 - 27 SAFETY COUPLING
 - 28 SAFETY COUPLING BOLT & NUT
 - 29 OPERATING STEM LOWER
 - 30 INTERMEDIATE SECTION
 - 31 DRIP VALVE
 - 32 DRAIN HOLE LINING C/W ELBOW
 - 34 SEAT "O" RING BOTTOM
 - 34a SEAT "O" RING TOP
 - 35 MAIN VALVE DISC
 - 38 MAIN VALVE "O" RING
 - 39 DRIP VALVE FACING
 - 40 HOLDING CLAMP

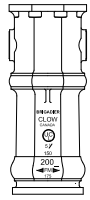
- DESCRIPTION**
- 42 MAIN VALVE SEAT
 - 44 ELBOW (STATE INLET REQUIRED)
 - 48 HOLDING CLAMP SCREW
 - *49 1/4" DRAIN HOLE PLUG (INTERNAL)
 - *49a 3/8" PIPE PLUGS (EXTERNAL)
 - 55 PIPE FLANGE BOTTOM
 - 56 RETAINING RING
 - 61 PUMPER CAP GASKET
 - 62a HOSE NOZZLE "O" RING
 - 62b PUMPER NOZZLE "O" RING
 - 63 OPERATING NUT GLAND
 - 64 HYDRALUBE OPERATING NUT
 - 65 OPERATING NUT "O" RINGS
 - 66 LOWER VALVE PLATE
 - 67 LOCKWASHER (1 1/8")
 - 68 LOWER VALVE PLATE "O" RING
 - 69 HOSE NOZZLE SET SCREW
 - 70 OPERATING STEM UPPER
 - *75 STORZ 100 PUMPER NOZZLE (ZG) BRONZE
 - 81 SEAT RING C/W ELBOW
 - 82 PIPE FLANGE TOP
 - 83 SAFETY CPLG. CLEVIS BOLT & PIN
 - 97 PIPE TO ELBOW BOLTS & NUTS
 - 102 OCTAGONAL HOSE CAP
 - 103 OCTAGONAL PUMPER CAP
 - *105 OCTAGONAL STORZ PUMPER CAP
 - 106 BODY CAP GASKET FOR OCT. BODY CAP
 - 107 BODY CAP HEX BOLTS & NUTS

*OPTIONAL PARTS

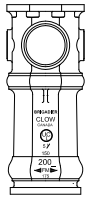


CLOW CANADA - M67B BRIGADIER HERITAGE HYDRANT

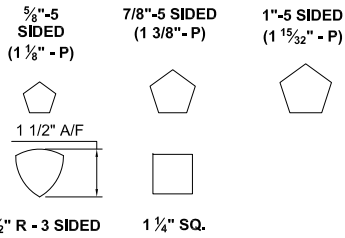
HYDRANT BODY STYLES



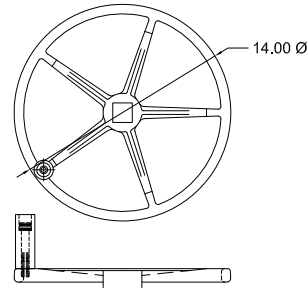
2 HOSE BODY



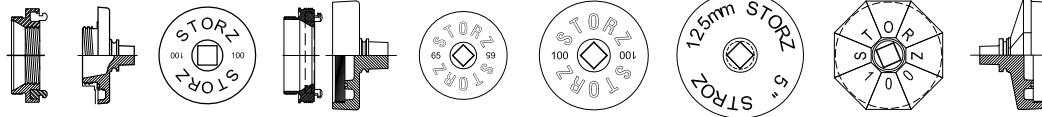
2 HOSE 1 PUMPER BODY



AVAILABLE OPERATING NUTS



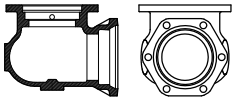
OPTIONAL HANDWHEEL & SPINNER



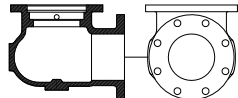
STORZ OPTIONS

STORZ 65mm HOSE NOZZLE, STORZ 100mm PUMPER NOZZLE, STORZ 125mm PUMPER NOZZLE, OCTAGONAL STORZ 100mm CAP & STORZ 100mm 316 STAINLESS STEEL

AVAILABLE HYDRANT END CONNECTIONS



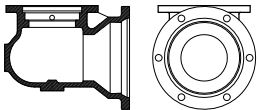
6" M.J. CAST IRON ELBOW



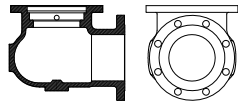
6" FLANGED CAST IRON ELBOW



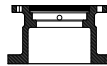
6" CAST IRON ON-LINE CHAMBER



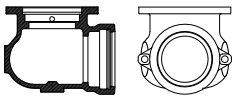
8" M.J. CAST IRON ELBOW



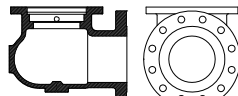
6" 150 LB FLANGED DUCTILE IRON RAISED FACE ELBOW



8" CAST IRON ON-LINE CHAMBER

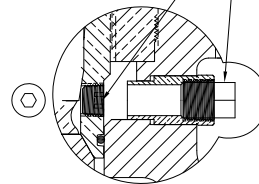


6" PUSH-ON CAST IRON ELBOW



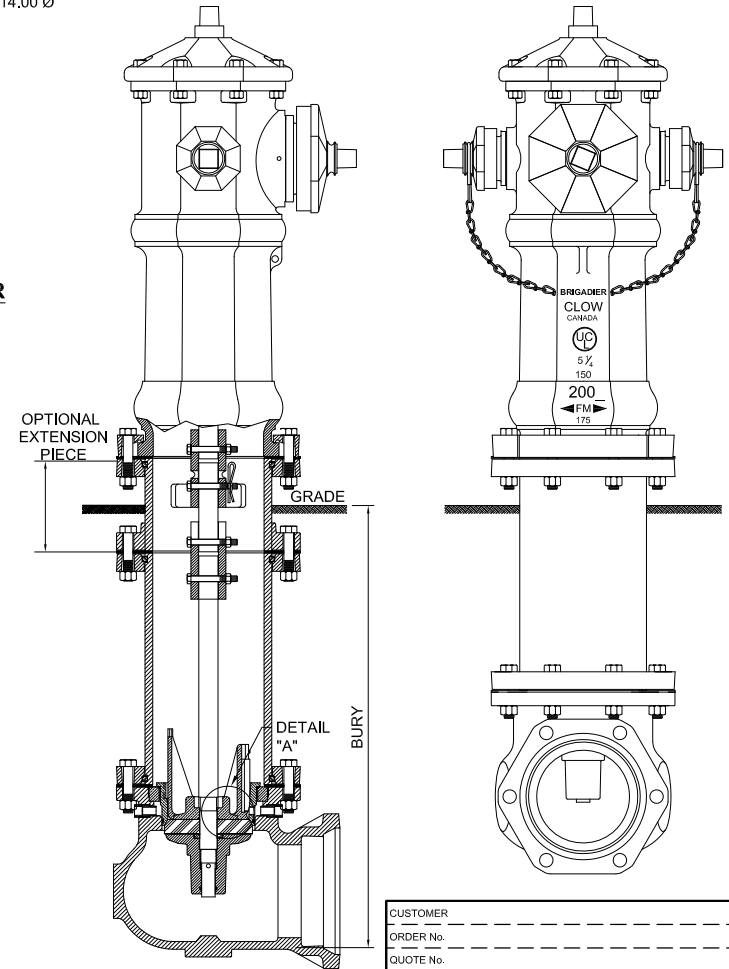
6" 250 LB FLANGED DUCTILE IRON RAISED FACE ELBOW

PERMANENT 3/8" SQUARE HEAD BRASS PIPE PLUG (2) FACTORY INSTALLED
REMOVABLE / INSERTABLE 1/4" NPT BRASS PLUG



METHOD OF PLUGGING DRAIN HOLE IN MAIN VALVE SEAT / INLET

DETAIL "A"



| | |
|--|---------------------|
| CUSTOMER | _____ |
| ORDER No. | _____ |
| QUOTE No. | _____ |
| JOB | _____ |
| M67B HERITAGE "BRIGADIER" COMPRESSION TYPE HYDRANT | |
| CLOW CANADA | |
| JULY 2013 | DWG. No. McM-551507 |

M67 BRIGADIER HYD. WITH BOLTED BODY CAP MATERIAL LIST

| REF No | DESCRIPTION | MATERIAL | REF No | DESCRIPTION | MATERIAL |
|--------|---------------------------------------|-----------------------------|--------|---|-----------------------------|
| 2 | HOSE NOZZLE | COPPER ALLOY | 49 | DRAIN HOLE PLUG | BRASS |
| 3 | HOSE NOZZLE CAP | CAST IRON | 50 | INTERSECTION EXTENSION | DUCTILE IRON |
| 4 | HOUSING STEM "O" RINGS | BUNA - N | 51 | EXTENSION STEM | STEEL |
| 5 | HOSE CAP CHAIN & "S" HOOK | STEEL ZINC PLATED | 52 | ALIGNMENT COUPLING | CAST IRON |
| 6 | HOUSING JOINT GASKET | COMPRESSED NON-ASBESTOS | 53 | EXTENSION STEM BOLTS & NUTS (3/8" x 3") | STEEL ZINC PLATED |
| 7 | OIL HOLE SCREW | BRASS | 55 | PIPE FLANGE (BOTTOM) | CAST IRON |
| 9 | OPERATING NUT "O" RING | BUNA - N | 56 | RETAINING RING (SQUARE) | STEEL ZINC PLATED |
| 12 | OPERATING NUT BEARING | DELIRIN | 57 | MONITOR BOLT & NUT (5/8" x 2 3/4") | STEEL ZINC PLATED / 18-8 SS |
| 13 | CAP SCREW (1/2" x 1 1/4") | STEEL ZINC PLATED | 58 | MONITOR ELBOW | CAST IRON |
| 17 | HOSE CAP GASKET | RED RUBBER | 59 | MONITOR GASKET | RED RUBBER |
| 18 | STORZ 100 PUMPER CAP "O" RING | BUNA - N | 61 | PUMPER CAP GASKET | RED RUBBER |
| 19 | PUMPER NOZZLE CAP | CAST IRON | 62a | HOSE NOZZLE "O" RING | BUNA - N |
| 20 | PUMPER NOZZLE | COPPER ALLOY | 62b | PUMPER NOZZLE "O" RING | BUNA - N |
| 21 | PUMPER CAP CHAIN & "S" HOOK | STEEL ZINC PLATED | 63 | OPERATING NUT RETAINING GLAND | CAST IRON |
| 22 | PUMPER NOZZLE PIN | BRASS | 64 | HYDRALUBE OPERATING NUT | COPPER ALLOY |
| 24 | INTERSECTION BOLTS & NUTS | STEEL ZINC PLATED / 18-8 SS | 65 | OPERATING NUT "O" RINGS (RETAINING GLAND) | BUNA - N |
| 25 | SAFETY FLANGE (SEGMENTS) | CAST IRON | 66 | LOWER VALVE PLATE | CAST IRON |
| 26 | INTERSECTION GASKET | RED RUBBER | 67 | LOCKWASHER (1 1/8") | 18-8 STAINLESS STEEL |
| 27 | SAFETY COUPLING | CAST IRON | 68 | LOWER VALVE PLATE "O" RING | BUNA - N |
| 28 | SAFETY COUPLING BOLT & NUT (3/8"x 3") | STEEL ZINC PLATED | 69 | HOSE NOZZLE SET SCREW (1/4" x 3/4") | 18-8 STAINLESS STEEL |
| 29 | OPERATING STEM LOWER | STEEL | 70 | OPERATING STEM UPPER | 416 MX STAINLESS STEEL |
| 30 | INTERMEDIATE SECTION | DUCTILE IRON | 71 | STORZ 100 PUMPER NOZZLE | STAINLESS STEEL |
| 31 | DRIP VALVE | COPPER ALLOY | 72 | STORZ 65 HOSE NOZZLE | COPPER ALLOY |
| 32 * | DRAIN HOLE LINING | BRASS | 73 | STORZ 65 HOSE CAP "O" RING | BUNA - N |
| 34a | SEAT "O" RING (TOP) | BUNA - N | 74 | STORZ 65 HOSE CAP | CAST IRON |
| 34 | SEAT "O" RING (BOTTOM) | BUNA - N | 75 | STORZ 100 PUMPER NOZZLE | COPPER ALLOY |
| 35 | MAIN VALVE DISC | RUBBER OR POLYURETHANE | 76 | STORZ 100 PUMPER CAP | CAST IRON |
| 38 | MAIN VALVE "O" RING | BUNA - N | 77 | BODY CAP ALLEN SCREWS OR HEX BOLTS | 18-8 STAINLESS STEEL |
| 39 | DRIP VALVE FACING | RUBBER | 78 | BODY CAP | CAST IRON |
| 40 | HOLDING CLAMP | PLASTIC | 79 | BODY CAP GASKET | RED RUBBER |
| 42 | MAIN VALVE SEAT | COPPER ALLOY | 80 | BODY | CAST IRON |
| 44 * | ELBOW (STATE INLET REQUIRED) | CAST IRON | 81 * | SEAT RING | COPPER ALLOY |
| 45 ** | GUIDE PLATE ASSEMBLY | STEEL | 82 | PIPE FLANGE (TOP) | CAST IRON |
| 46 ** | INTERIOR WRENCH | STEEL | 83 | SAFETY COUPLING CLEVIS BOLT & PIN | STEEL ZINC PLATED |
| 47 | HOLDING NUT | COPPER ALLOY | 97 | PIPE TO ELBOW BOLTS& NUTS | STEEL ZINC PLATED / 18-8 SS |
| 48 | HOLDING CLAMP SCREW | BRASS | | | |

* PERMANENTLY ASSEMBLED PARTS SUPPLIED WITH ELBOW REF. No. 44

** SUPPLIED AS ASSEMBLY ONLY