

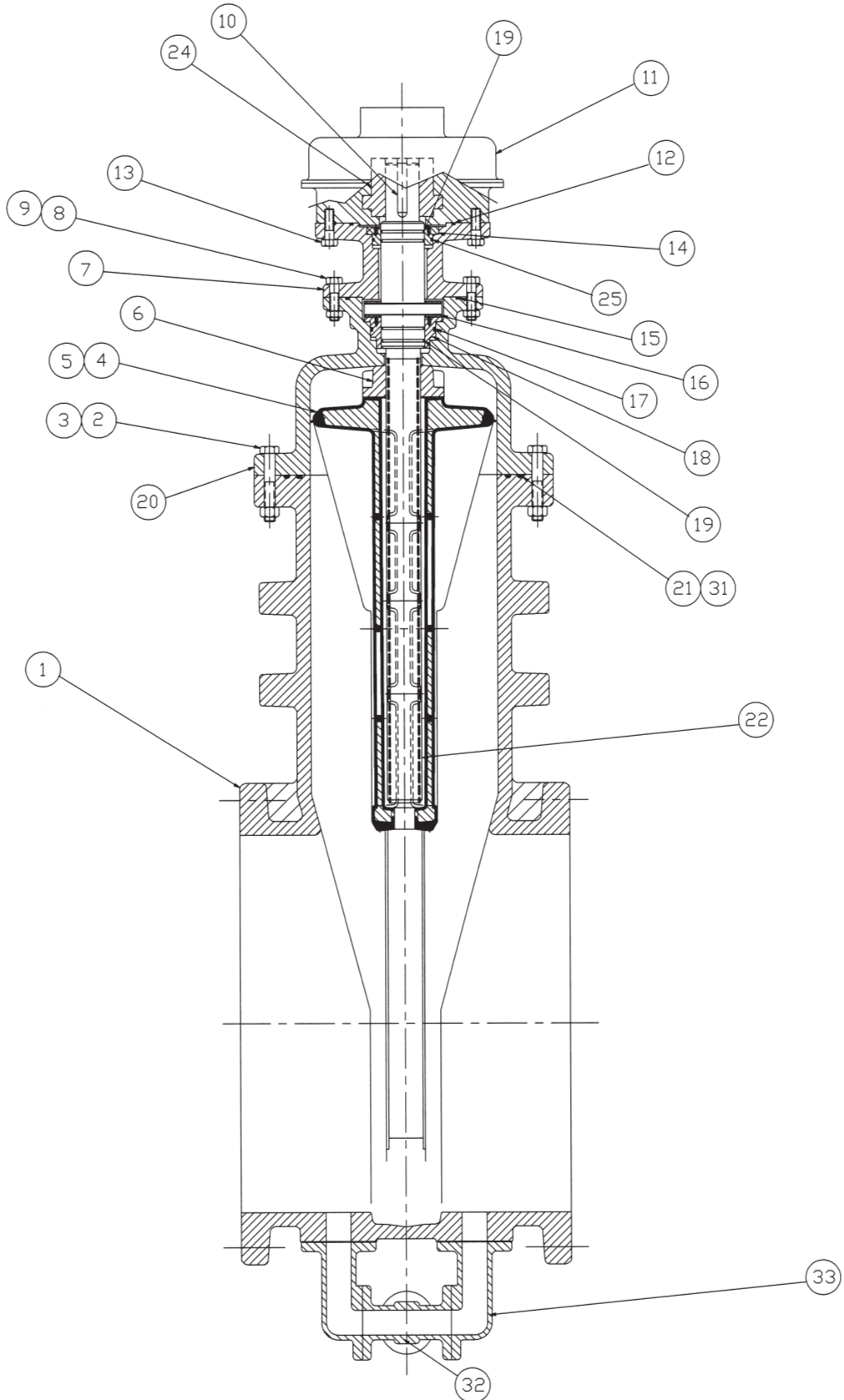
2638-64  
B 10/28/10

Complies with applicable  
requirements of AWWA C515

30"-48" RW VALVE BEVEL GEAR  
ASSEMBLY WITH BYPASS

**CLOW VALVE COMPANY**

MODEL 2638



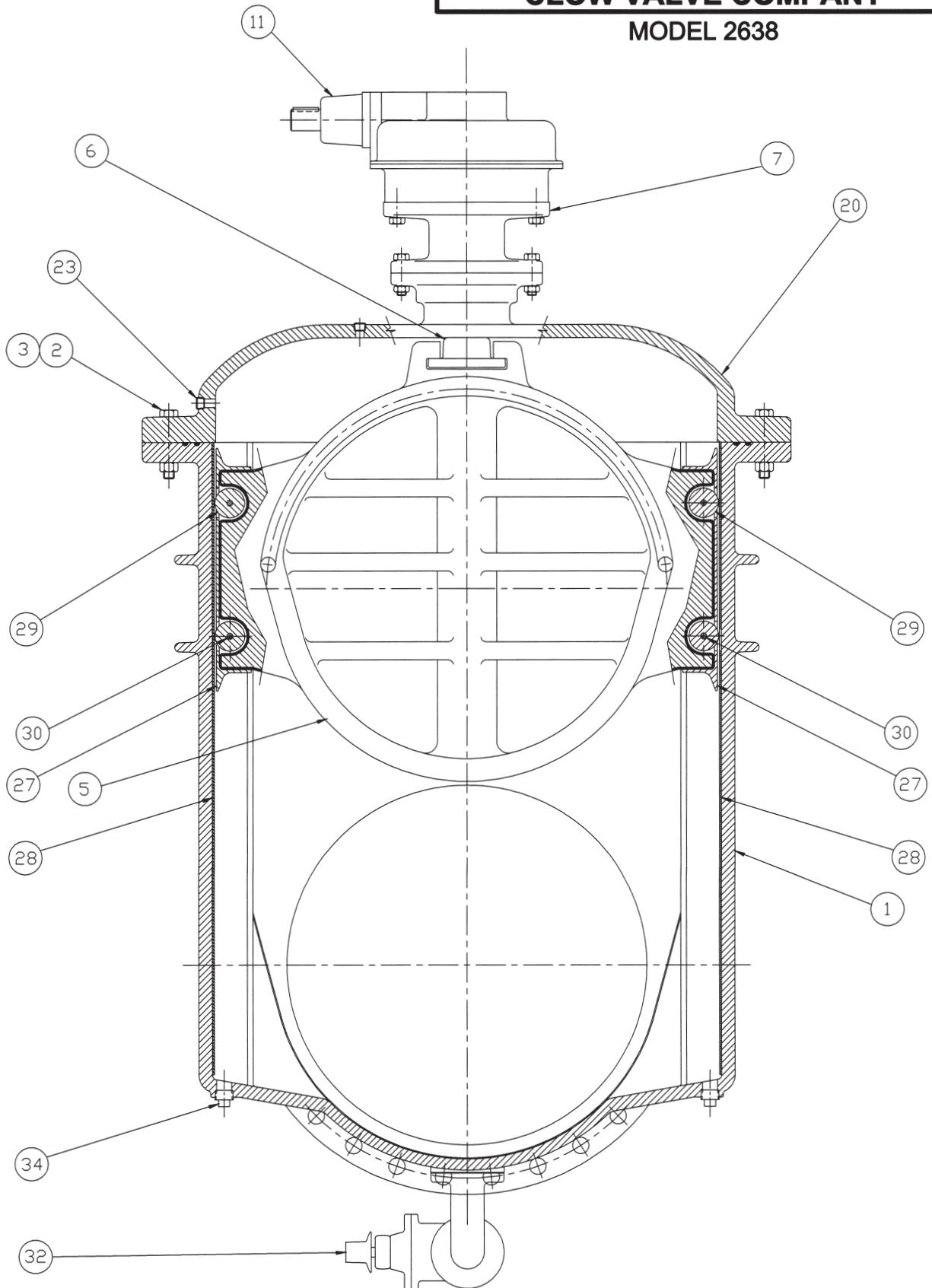
2638-65  
E 10/10

Complies with applicable  
requirements of AWWA C515

30"-48" R/W VALVE BEVEL GEAR  
ASSEMBLY WITH BYPASS

**CLOW VALVE COMPANY**

MODEL 2638



**Complies with applicable  
requirements of AWWA C515**

**30"-48" R/W VALVE BEVEL GEAR  
PARTS LIST WITH BYPASS**

**CLOW VALVE COMPANY**

**MODEL 2638**

Item	Description	Material
1	Body - Mechanical Joint	Ductile iron
	Body - Flange	Ductile iron
	Body - MJ x Flange	Ductile iron
2	Bolt	Stainless Steel
3	Nut	Stainless Steel
4	Wedge Casting	Ductile iron
5	Molded Wedge	Rubber
6	Stem Nut	Copper Alloy
7	Extension - actuator	Ductile iron
8	Bolt	Stainless Steel
9	Nut	Stainless Steel
10	Key	Steel
11	Actuator - bevel gear	-
12	□-ring	Rubber
13	Bolt	Stainless Steel
14	Bushing - stem guide	Copper Alloy
15	□-ring	Rubber
16	Thrust Bearing	Nylatron
17	□-ring	Rubber
18	Cover Bushing	Copper Alloy
19	□-ring	Rubber
20	Cover	Ductile iron
21	□-ring - cover outer	Rubber
22	Stem	Copper Alloy
23	Pipe Plug	Stainless Steel
24	Actuator Drive Bushing	Steel
25	□-ring	Rubber
27	Scraper	Copper Alloy
28	Track	Stainless Steel
29	Roller	Copper Alloy
30	Pin - roller	Stainless Steel
31	□-ring - cover inner	Rubber
32	Bypass Valve	Ductile iron
33	Bypass Elbow	Ductile iron
34	Pipe Plug	Stainless Steel

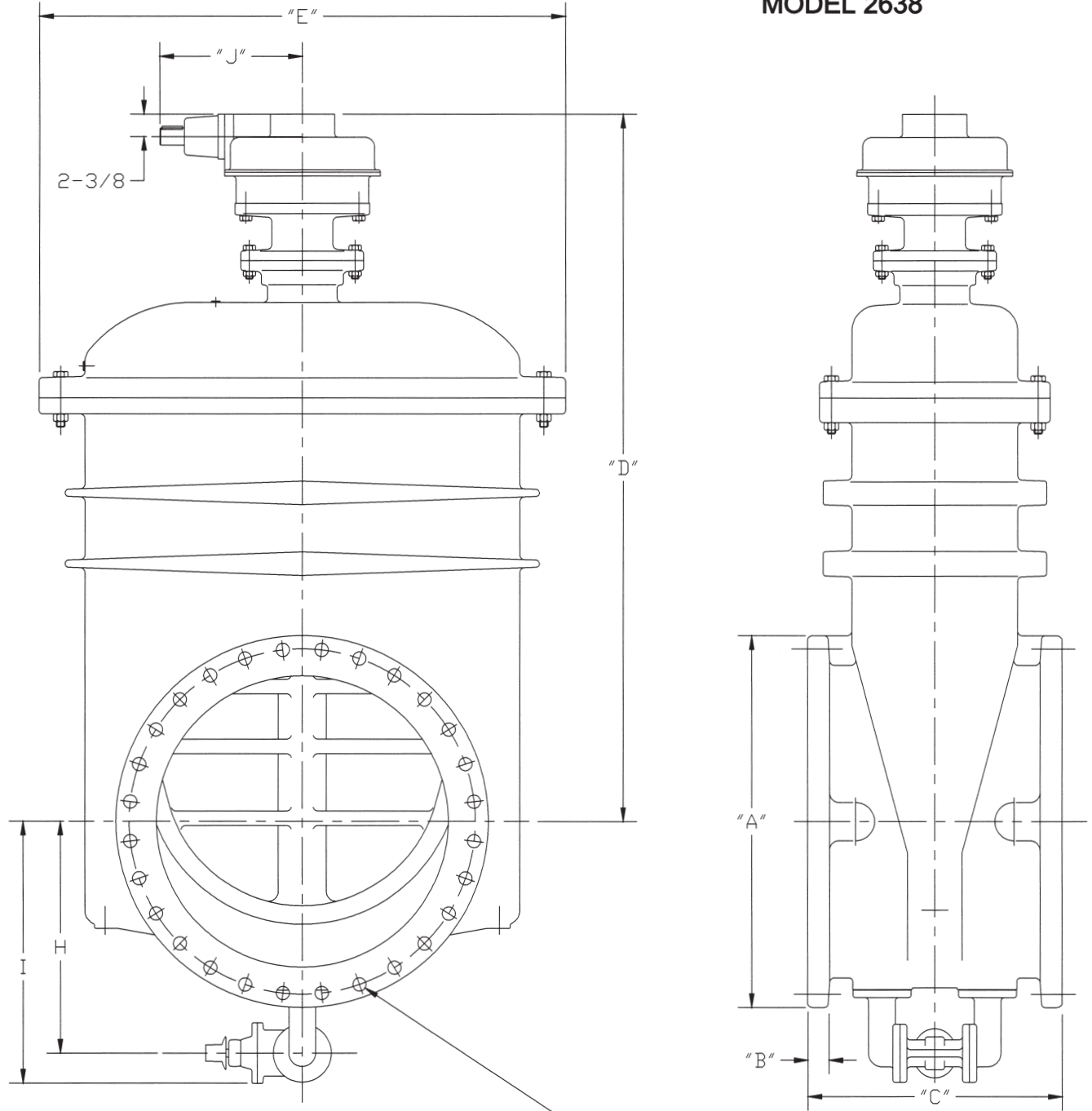
2638-67  
D 10/10

Complies with applicable  
requirements of AWWA C515

30"-48" R/W VALVE FLANGED ENDS BEVEL  
GEAR BYPASS GENERAL DIMENSIONS

**CLOW VALVE COMPANY**

MODEL 2638



ANSI B16.1 Class 125 Drilling  
for "F" # & "G" Size Bolts

Valve Size	"A"	"B"	"C"	"D"	"E"	"F"	"G"	"H"	"I"	"J"
30"	38-3/4	2-1/8	26-1/2	73-3/4	54-3/4	28	1-1/4	24	27	14-7/8
36"	46	2-3/8	30-3/4	83-7/16	58-7/8	32	1-1/2	27-1/4	30-1/4	14-7/8
42"	53	2-5/8	36	100-3/4	78	36	1-1/2	30-15/16	35-7/16	17
48"	59-1/2	2-3/4	35-1/2	103-3/4	78	44	1-1/2	33-15/16	38-7/16	17

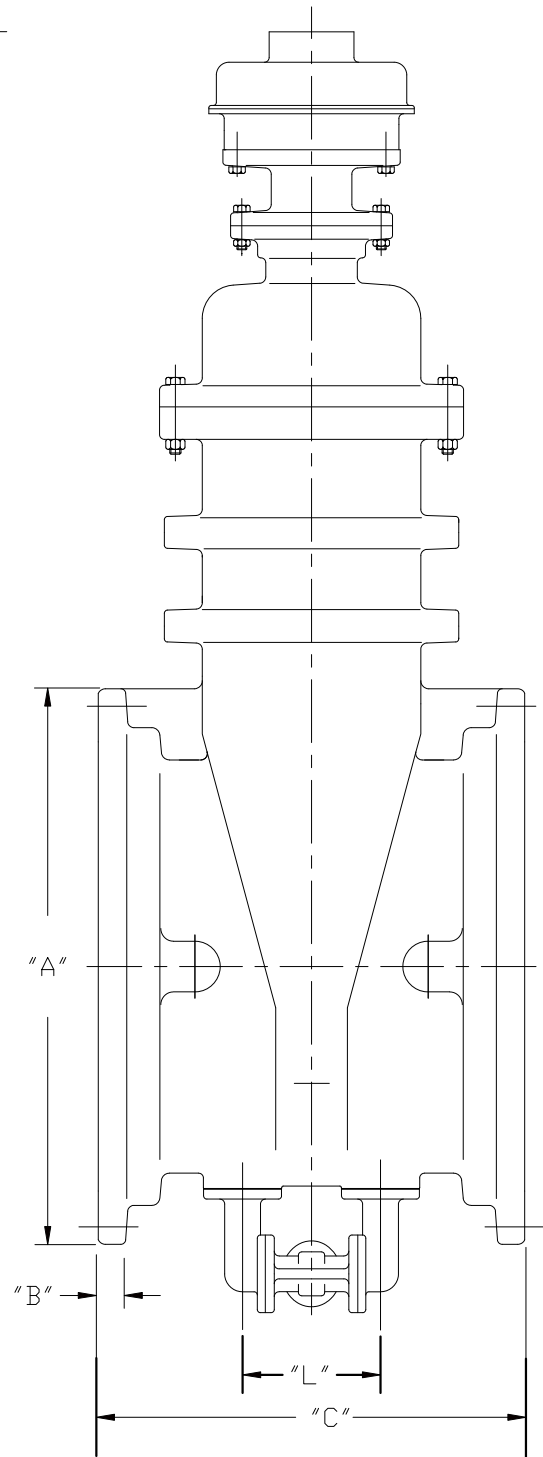
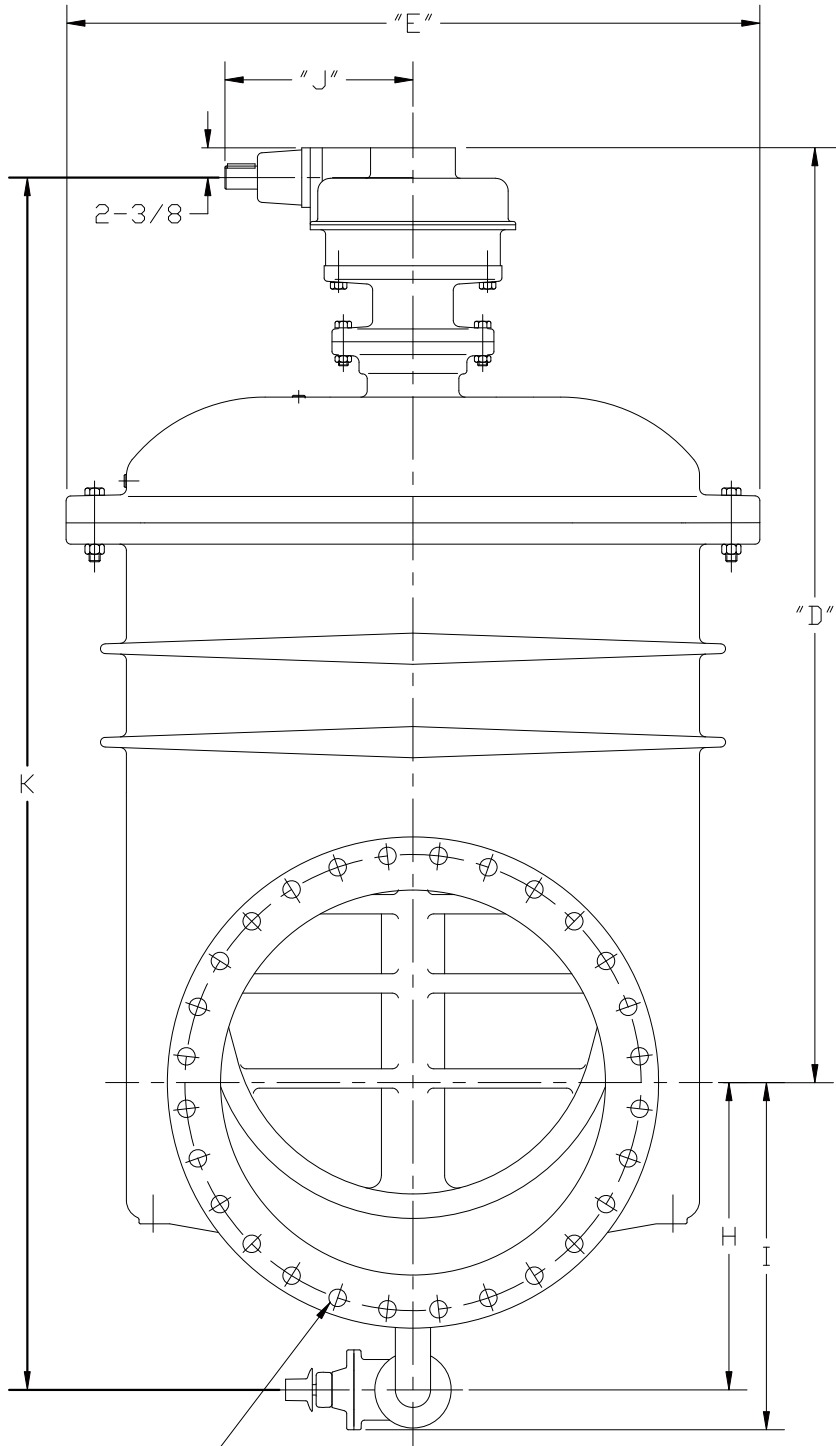
2638-68  
G 04/13

Complies with applicable requirements of AWWA C515

30"-48" R/W VALVE MJ ENDS BEVEL  
GEAR BYPASS GENERAL DIMENSIONS

**CLOW VALVE COMPANY**

MODEL 2638



ANSI/AWWA C111/A21.11 Drilling for "F" # & "G" Size Bolts

Valve Size	"A"	"B"	"C"	"D"	"E"	"F"	"G"	"H"	"I"	"J"	"K"	"L"
30"	39-1/2	1-11/16	35-1/2	73-3/4	54-3/4	20	1"	24	27	14-7/8	95-3/8	10-7/8
36"	46-1/2	2	38-3/4	83-7/16	58-7/8	24	1"	27-1/4	30-1/4	14-7/8	108-5/16	10-7/8
42"	54	2	39	100-3/4	78	28	1-1/4	30-15/16	35-7/16	17	129-5/16	14-3/8
48"	60-3/4	2	42	103-3/4	78	32	1-1/4	33-15/16	38-7/16	17	135-5/16	14-3/8

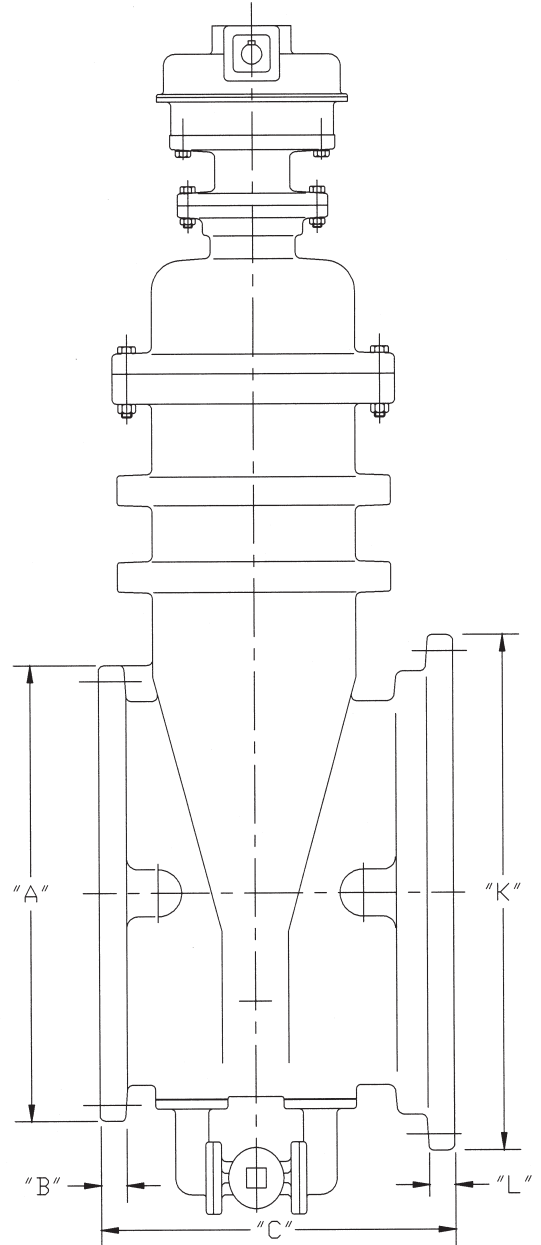
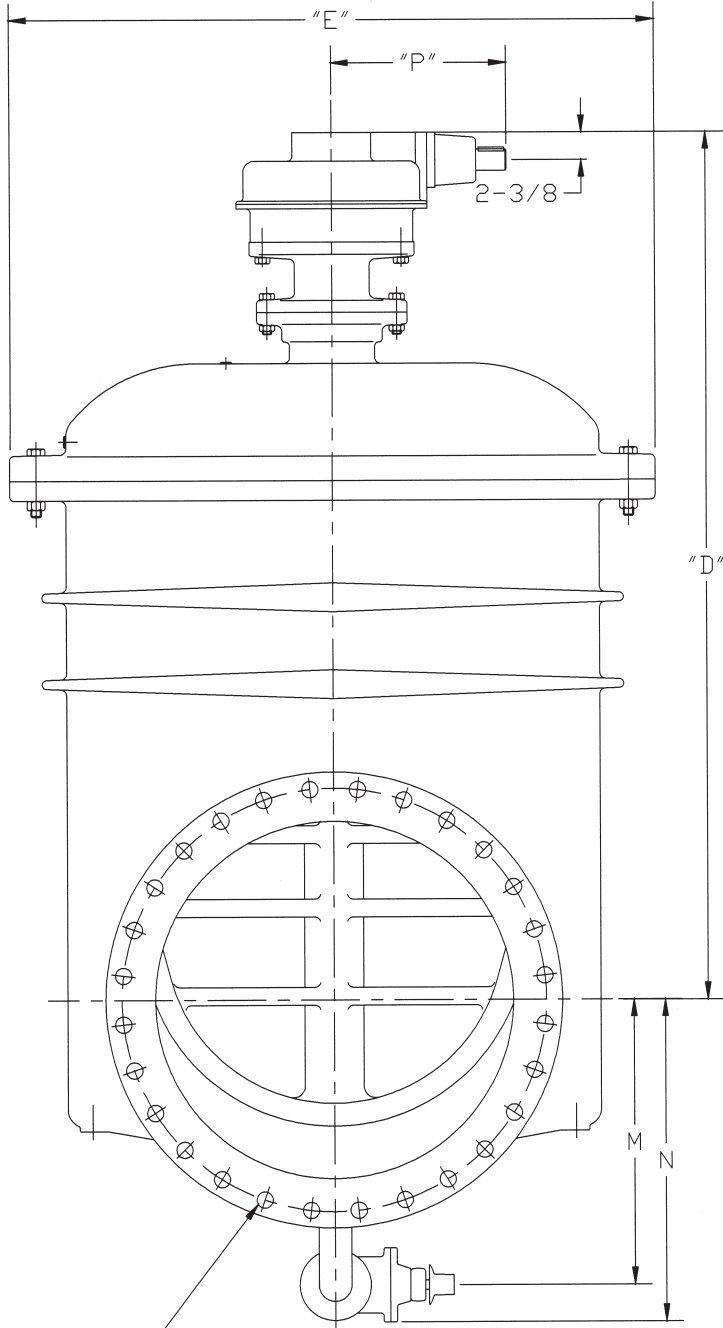
2638-69  
E 10/10

Complies with applicable requirements of AWWA C515

30"-48" R/W VALVE MJ x FLG ENDS BEVEL  
GEAR BYPASS GENERAL DIMENSIONS

**CLOW VALVE COMPANY**

MODEL 2638



Flange End: ANSI B16.1 Class 125  
Drilling for "F" # & "G" Size Bolts  
MJ End: ANSI/AWWA C111/A21.11  
Drilling for "H" # & "J" Size Bolts

V S	"A"	"B"	"C"	"D"	"E"	"F"	"G"	"H"	"J"	"K"	"L"	"M"	"N"	"P"
30"	38-3/4	2-1/8	31	73-3/4	54-3/4	28	1-1/4	20	1"	39-1/2	1-11/16	24	27	14-7/8
36"	46	2-3/8	34-3/4	83-7/16	58-7/8	32	1-1/2	24	1"	46-1/2	2	27-1/4	30-1/4	14-7/8
42"	53	2-5/8	37-1/2	100-3/4	78	36	1-1/2	28	1-1/4	54	2	30-15/16	35-7/16	17
48"	59-1/2	2-3/4	39	103-3/4	78	44	1-1/2	32	1-1/4	60-3/4	2	33-15/16	38-7/16	17

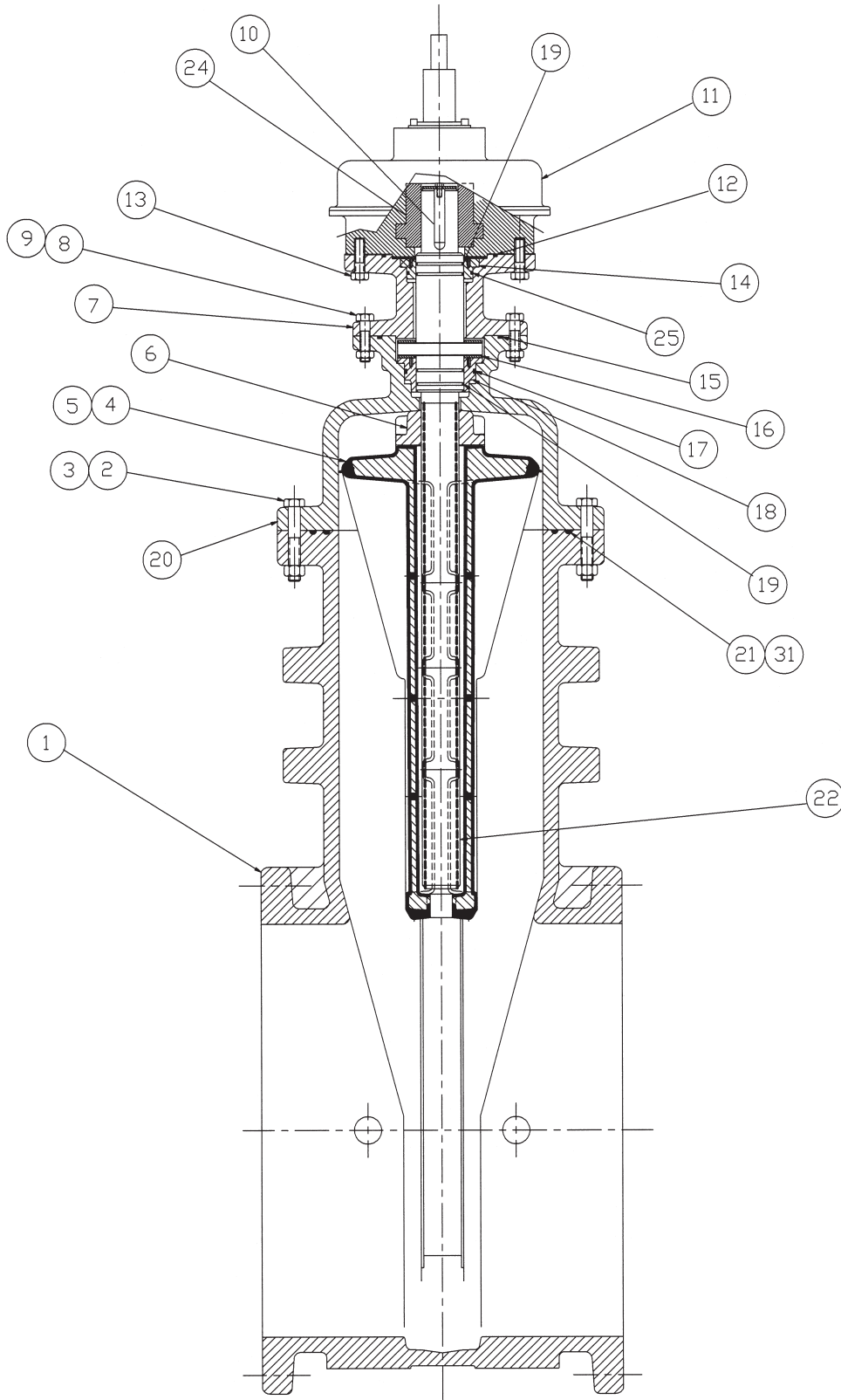
2638-72  
B 10/28/10

Complies with applicable  
requirements of AWWA C515

30"-48" R/W VALVE SPUR GEAR  
ASSEMBLY WITH BYPASS

**CLOW VALVE COMPANY**

MODEL 2638



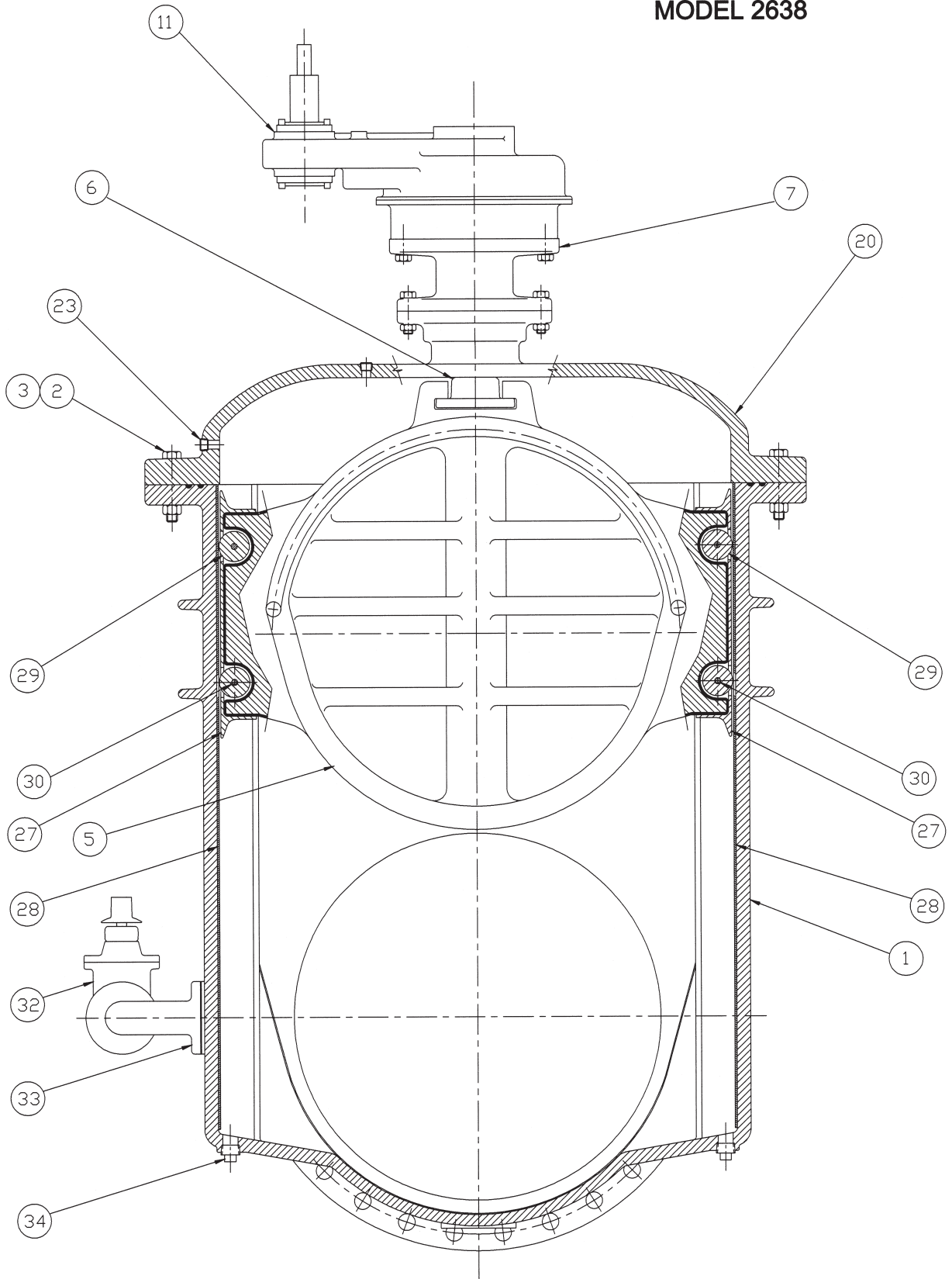
2638-73  
C 10/10

Complies with applicable  
requirements of AWWA C515

30"-48" R/W VALVE SPUR GEAR  
ASSEMBLY WITH BYPASS

**CLOW VALVE COMPANY**

MODEL 2638





Complies with applicable  
requirements of AWWA C515

30"-48" R/W VALVE SPUR GEAR  
PARTS LIST WITH BYPASS

**CLOW VALVE COMPANY**

MODEL 2638

Item	Description	Material
1	Body - Mechanical Joint	Ductile iron
	Body - Flange	Ductile iron
	Body - MJ x Flange	Ductile iron
2	Bolt	Stainless Steel
3	Nut	Stainless Steel
4	Wedge Casting	Ductile iron
5	Molded Wedge	Rubber
6	Stem Nut	Copper Alloy
7	Extension - actuator	Ductile iron
8	Bolt	Stainless Steel
9	Nut	Stainless Steel
10	Key	Steel
11	Actuator - spur gear	-
12	□-ring	Rubber
13	Bolt	Stainless Steel
14	Bushing - stem guide	Copper Alloy
15	□-ring	Rubber
16	Thrust Bearing	Nylatron
17	□-ring	Rubber
18	Cover Bushing	Copper Alloy
19	□-ring	Rubber
20	Cover	Ductile iron
21	□-ring - cover outer	Rubber
22	Stem	Copper Alloy
23	Pipe Plug	Stainless Steel
24	Actuator Drive Bushing	Steel
25	□-ring	Rubber
27	Scraper	Copper Alloy
28	Track	Stainless Steel
29	Roller	Copper Alloy
30	Pin - roller	Stainless Steel
31	□-ring - cover inner	Rubber
32	Bypass Valve	Ductile iron
33	Bypass Elbow	Ductile iron
34	Pipe Plug	Stainless Steel

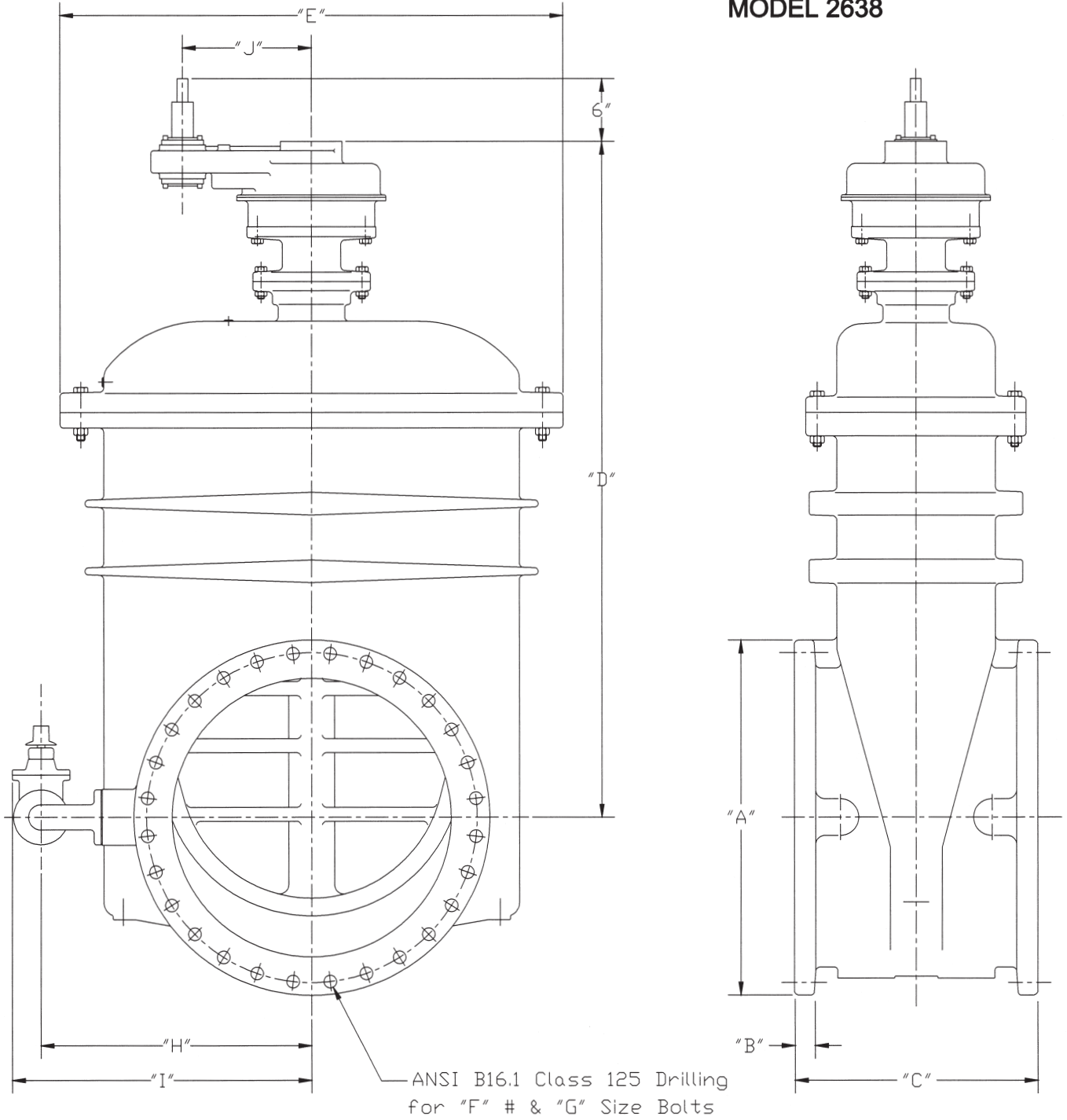
2638-75  
C 10/10

Complies with applicable requirements of AWWA C515

30"-48" R/W VALVE FLANGED ENDS SPUR GEAR BYPASS GENERAL DIMENSIONS

**CLOW VALVE COMPANY**

MODEL 2638



Valve Size	"A"	"B"	"C"	"D"	"E"	"F"	"G"	"H"	"I"	"J"
30"	38-3/4	2-1/8	26-1/2	74	54-3/4	28	1-1/4	29-7/16	32-7/16	14
36"	46	2-3/8	30-3/4	83-11/16	58-7/8	32	1-1/2	32-7/8	35-7/8	14
42"	53	2-5/8	36	102-1/2	78	36	1-1/2	42-9/16	47-1/16	16
48"	59-1/2	2-3/4	35-1/2	105-1/2	78	44	1-1/2	42-9/16	47-1/16	16

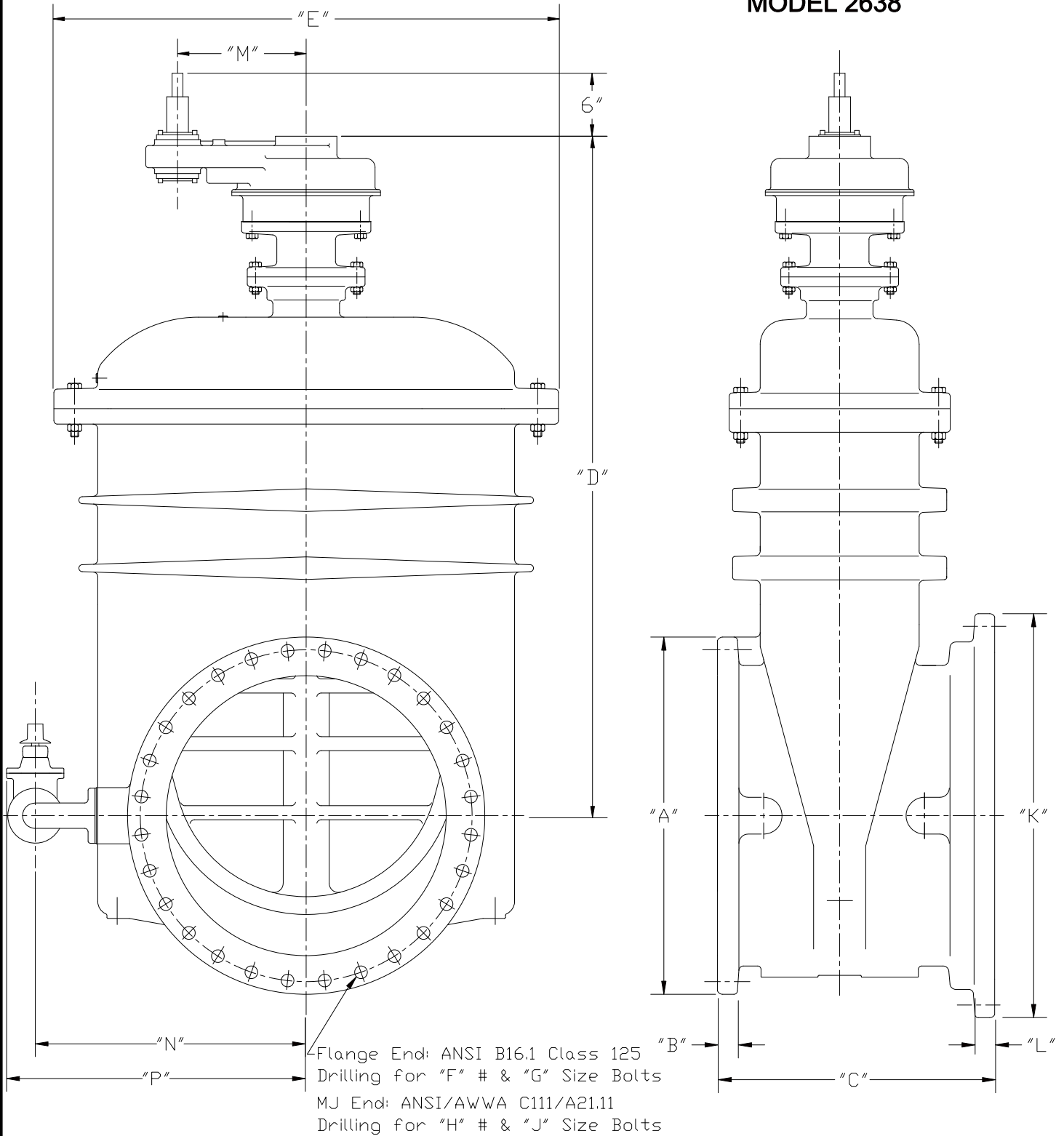
2638-134  
- 04/13

Complies with applicable requirements of AWWA C515

30"-48" R/W VALVE MJ x FLG ENDS SPUR GEAR BYPASS GENERAL DIMENSIONS

**CLOW VALVE COMPANY**

MODEL 2638



Valve Size	"A"	"B"	"C"	"D"	"E"	"F"	"G"	"H"	"J"	"K"	"L"	"M"	"N"	"P"
30"	38-3/4	2-1/8	31	74	54-3/4	28	1-1/4	20	1"	39-1/2	1-11/16	14	29-7/16	32-7/16
36"	46	2-3/8	34-3/4	83-11/16	58-7/8	32	1-1/2	24	1"	46-1/2	2	14	32-7/8	35-7/8
42"	53	2-5/8	37-1/2	102-1/2	78	36	1-1/2	28	1-1/4	54	2	16	42-9/16	47-1/16
48"	59-1/2	2-3/4	39	105-1/2	78	44	1-1/2	32	1-1/4	60-3/4	2	16	42-9/16	47-1/16

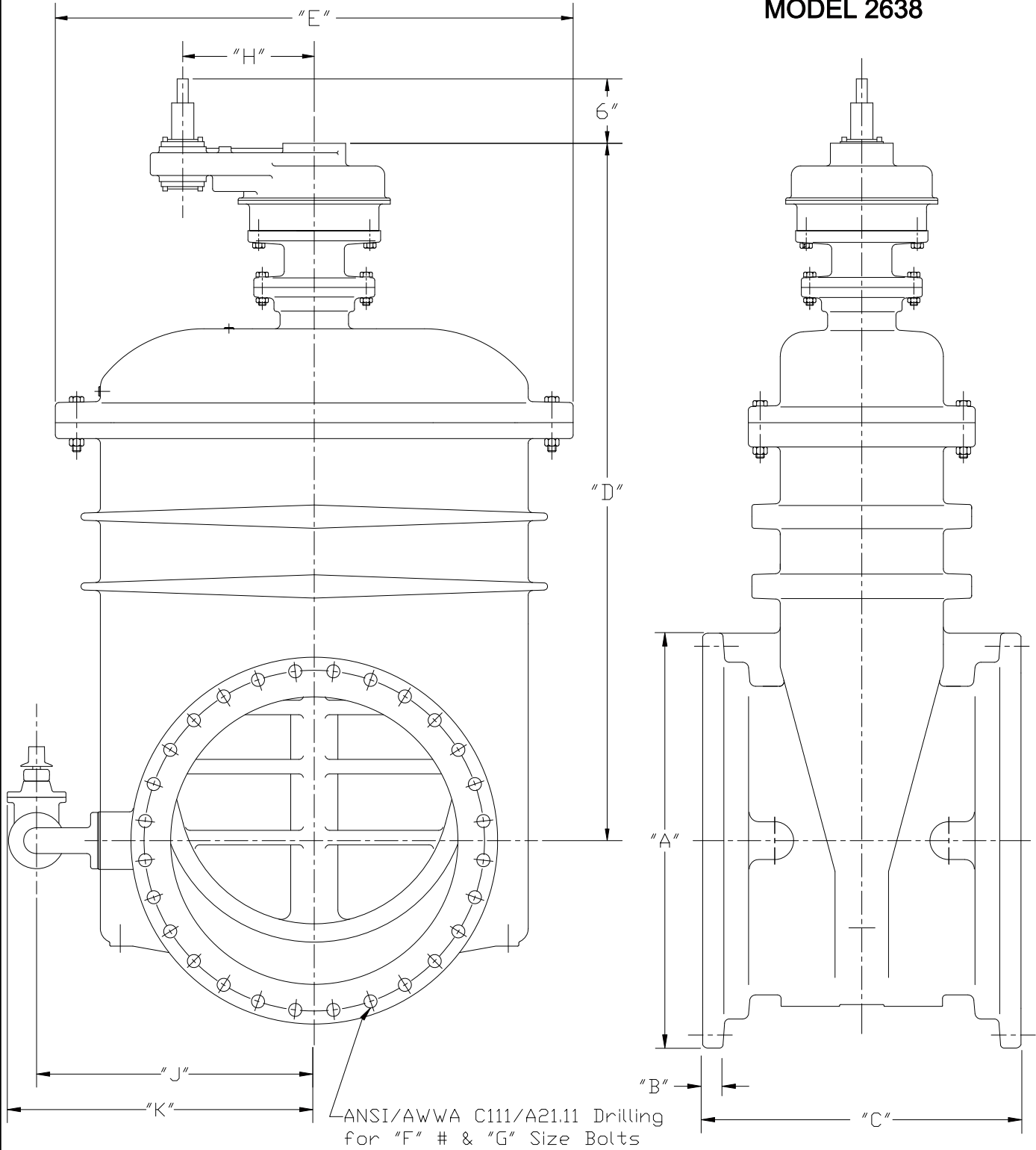
2638-133  
- 04/13

Complies with applicable requirements of AWWA C515

30" - 48" R/W VALVE MECH. JOINT ENDS  
SPUR GEAR BYPASS GENERAL DIMENSIONS

**CLOW VALVE COMPANY**

MODEL 2638



Valve Size	"A"	"B"	"C"	"D"	"E"	"F"	"G"	"H"	"J"	"K"
30"	39-1/2	1-11/16	35-1/2	74	54-3/4	20	1"	14	29-7/16	32-7/16
36"	46-1/2	2	38-3/4	83-11/16	58-7/8	24	1"	14	32-7/8	35-7/8
42"	54	2	39	102-1/2	78	28	1-1/4	16	42-9/16	47-1/16
48"	60-3/4	2	42	105-1/2	78	32	1-1/4	16	42-9/16	47-1/16